



DESKLIFT™ DL19  
Data sheet

# DESKLIFT™ DL19

---

The DESKLIFT DL19 is a 3-part lifting column with square profiles and motor housing. The column has invisible gliding pads for improved design. It is a perfect choice for a wide range of different desk applications ranging from industry to office desks. The 3-part construction ensures a short installation dimension combined with a long stroke length making the DL19 an optimum choice no matter what the height of the person using the desk is. The DL19 has a compact motor housing, which is Kick & Click™ compatible. The DL19 is available in several standard colours to fit into a wide range of desk designs. Optional PIEZO™ (collision protection) can be chosen. PIEZO minimises the risk for damages on a desk caused by collision with an obstacle.

The DL19 system is controlled by a DESKLINE® control box (CBD), it ensures optimal parallel drive and a pleasant low noise level. The DL19 can be used as a single column or in 2, 3 or 4 parallel systems.



---

## Features:

- 3-part motor housing column
- Square profiles, outer profile 70 x 70 mm
- Invisible gliding pads for an improved design
- Plug mounted on the DL19 for connection to the CBD with a DESKLINE® motor cable
- Max. thrust 800 N per column
- Max. speed 38 mm/s unloaded
- Standard installation dimension 560 mm
- Standard stroke length 650 mm
- Weight: 8.5 kg pr. column
- Dimension motor housing: 177 x 97 x 46 mm
- Bending moment:  $M_y = \max. 150 \text{ Nm}$  dynamic
- Colour: Black (RAL 9005), Silver grey (RAL 9006) or all parts white (RAL 9016)
- Low noise level
- Bench bracket for bench solutions

## Options:

- PIEZO™: Integrated sensor minimising the risk for damages on a desk caused by squeezing or blocking it in upward or downward direction
- Compatible with the Kick & Click™ mounting solution
- Compatible with DESKLIFT™ Feet

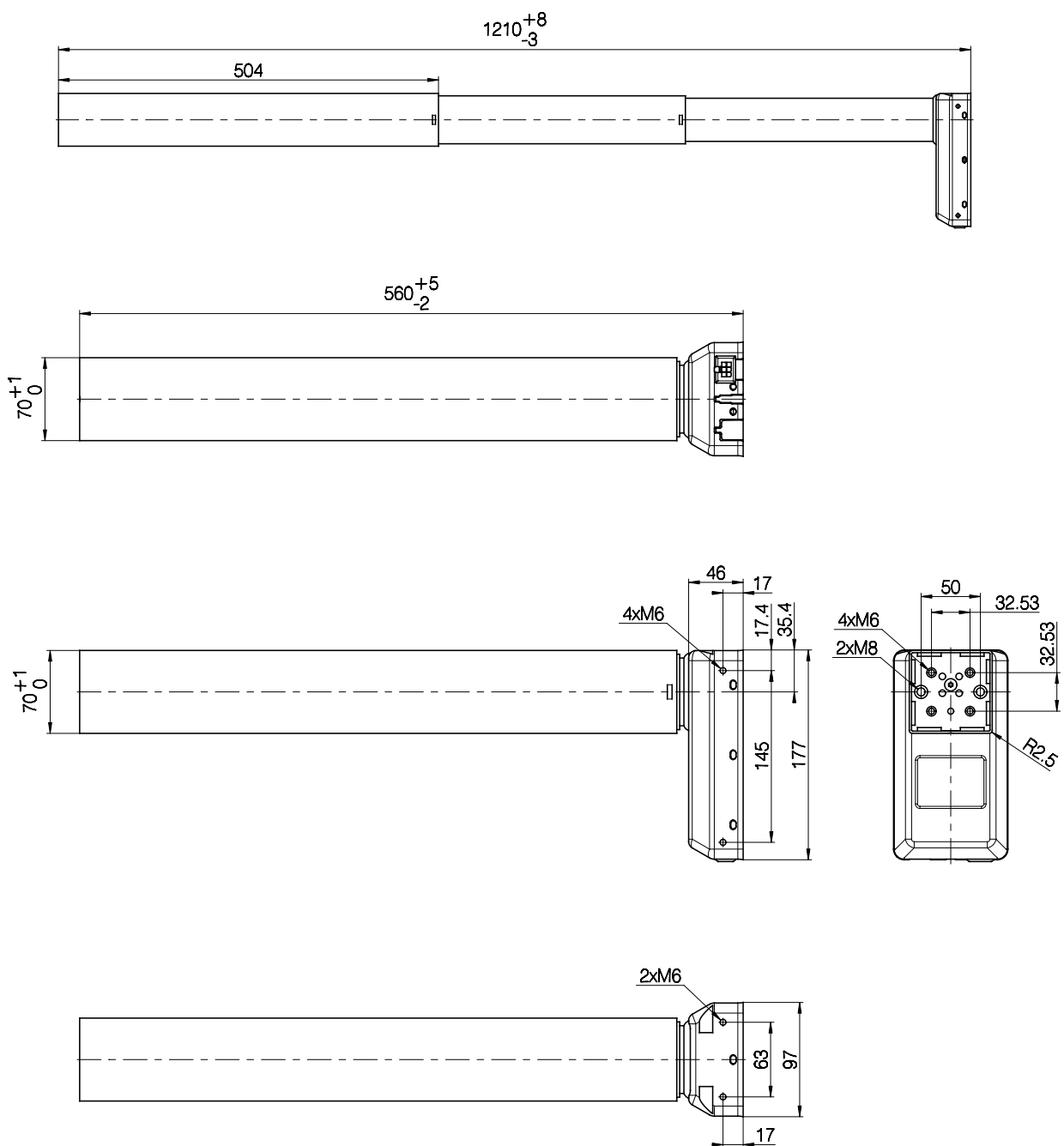
## Usage:

- Single or 2, 3 or 4 parallel drive or even multi-parallel with up to 16 columns
- Duty cycle: 10% ~ 2 minutes of continuous use at full load, followed by 18 minutes of pause
- Ambient temperature: +10° to +40° C
- Compatible with DESKLINE® control boxes and all DESKLINE® controls
- Approved in accordance with EN 60335-1 and UL 962
- Storage and transport temperature: -10° C to +70° C

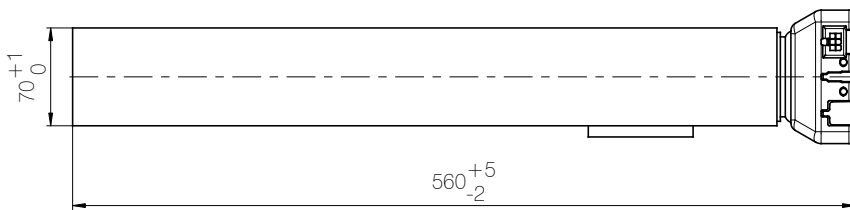
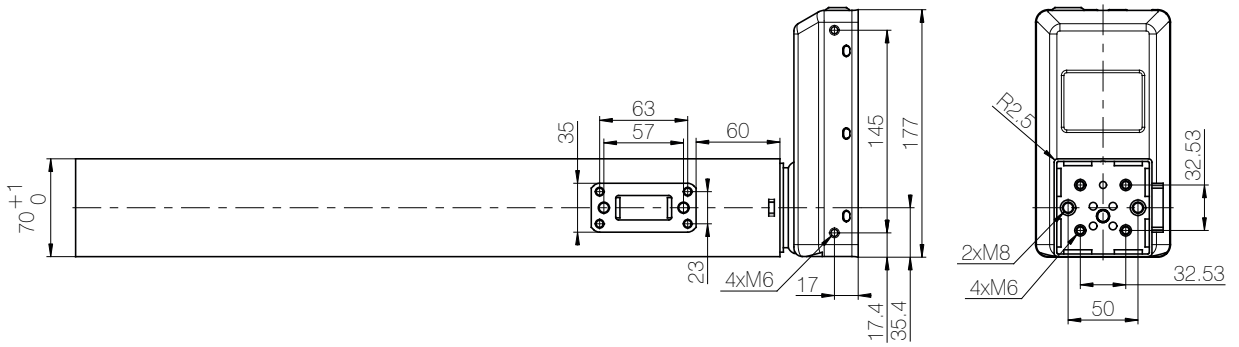
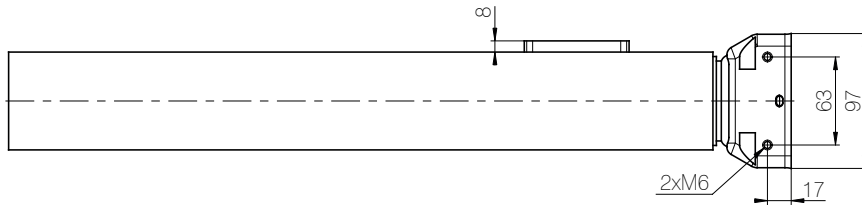
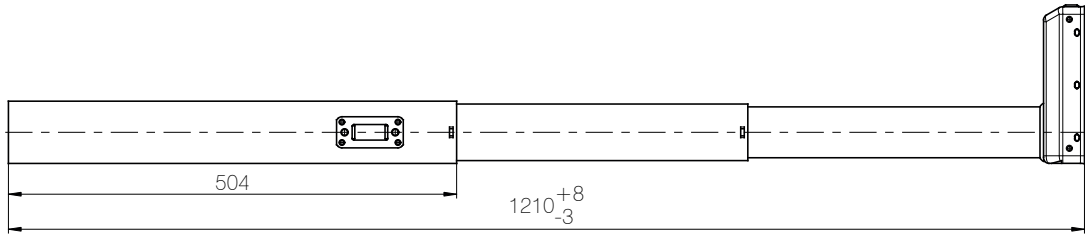
Technical specifications:

Type/	Max thrust per DL [N]	Self-lock per DL [N]	Speed at 0 load [mm/s]	Duty cycle [%]	Spindle pitch [mm]	Stroke length [mm]	Built-in length [mm]
DL19	800	800	38	10	20	650	560
DL19	1200	1200	23	10	12	650	560

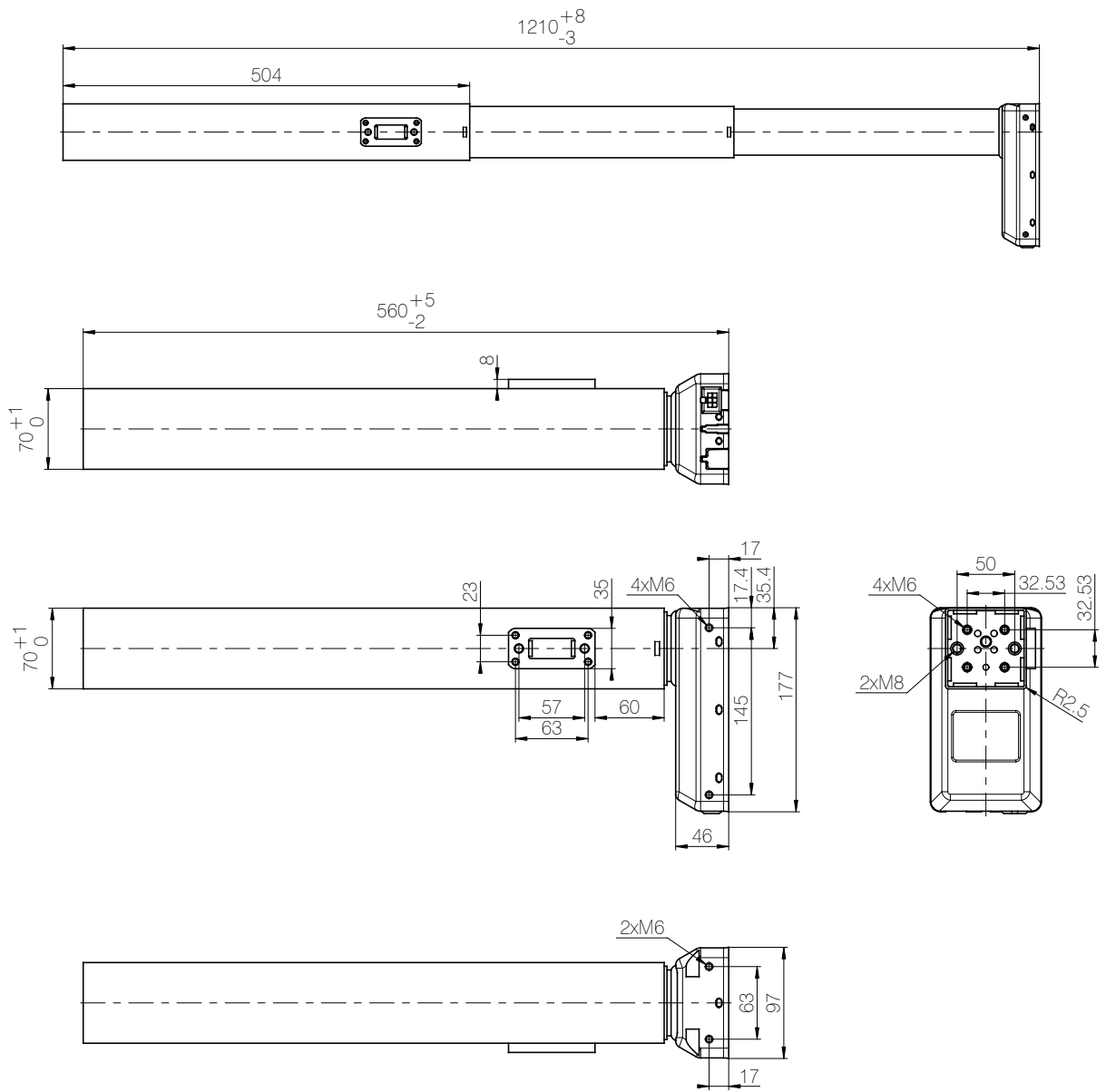
Dimensions, standard DL19 without bracket



Dimensions, standard DL19 with bench bracket  
Left column

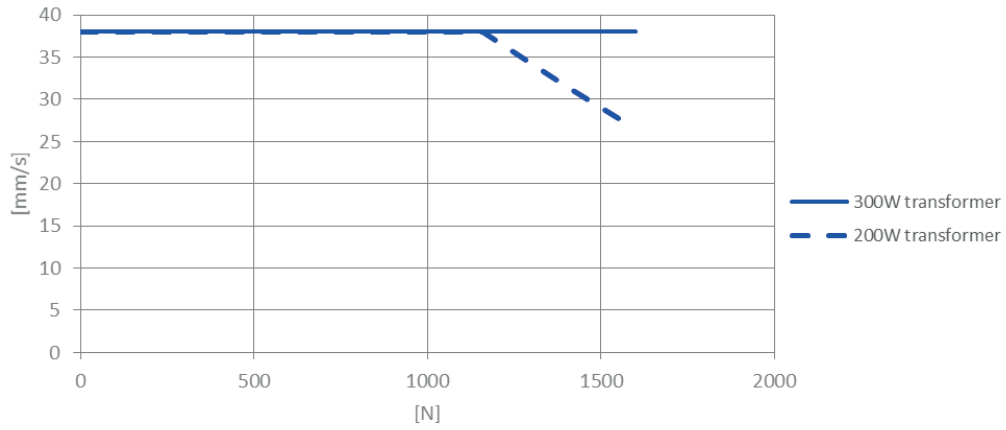


Dimensions, standard DL19 with bench bracket  
Right column

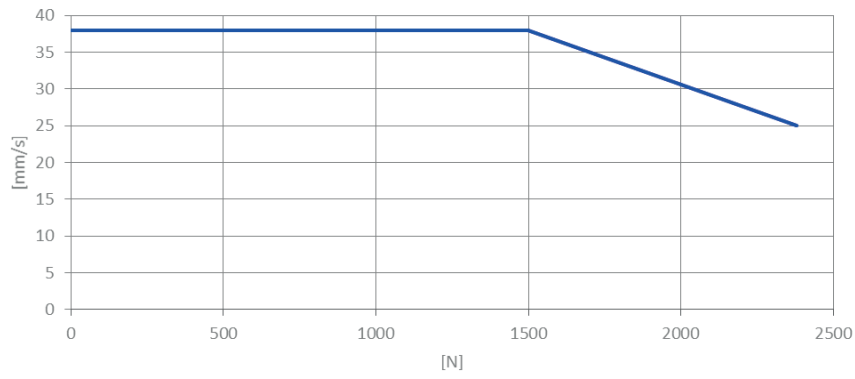


Curves DL19 800 N (20 mm spindle) with CBD65

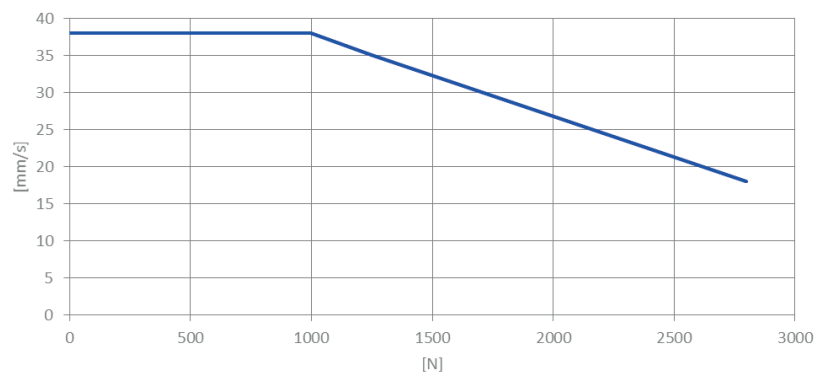
2 x DL19 (equally loaded) with CBD65



3 x DL19 (equally loaded) with CBD65 (300W)

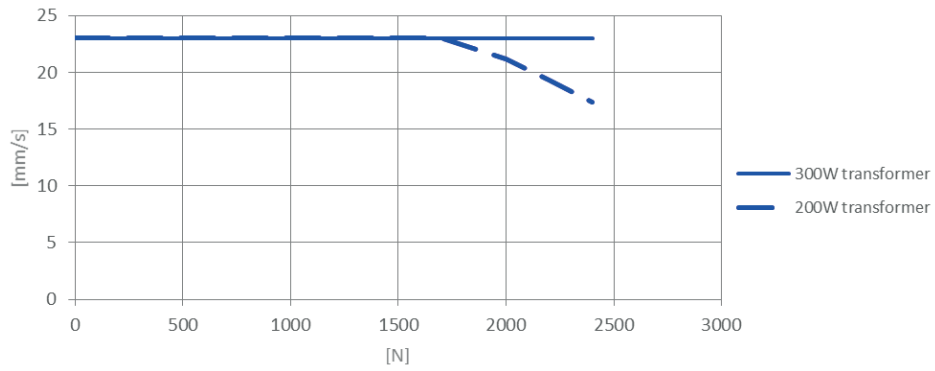


4 x DL19 (equally loaded) with CBD65 (300W)

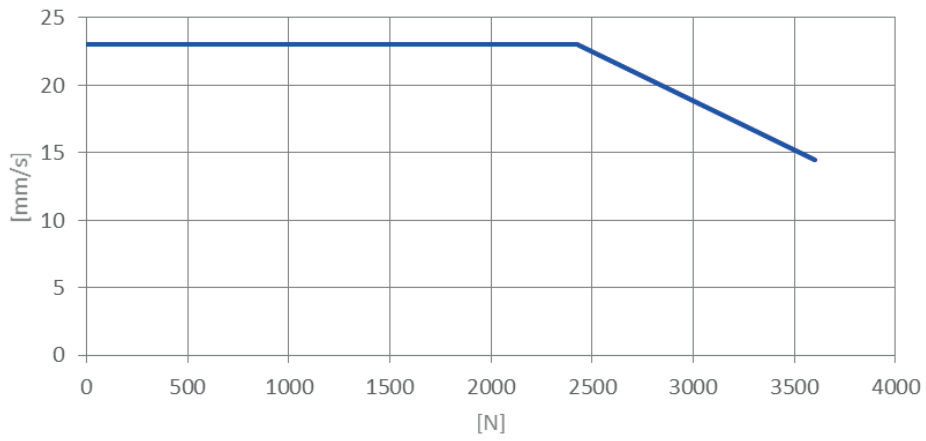


**DL19 1200 N version (12 mm spindle pitch)**

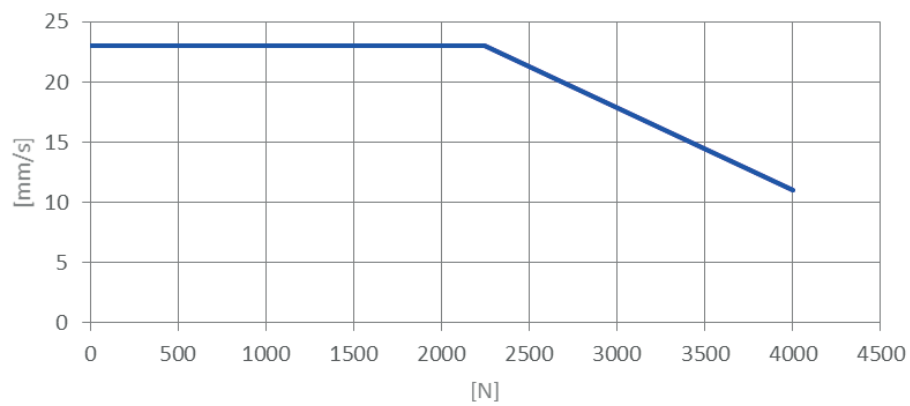
**2 x DL19 1200 N (equally loaded) with CBD6S**



**3 x DL19 1200 N (equally loaded) with CBD6S (300W)**



**4 x DL19 1200 N (equally loaded) with CBD6S (300W)**



## DL19

### Ordering example:

DL19	0	0	0	B	0	E	650	560	
									<b>Installation dimension:</b> 560 = 560 mm
									<b>Stroke length:</b> 650 = 650 mm
									<b>Motor type:</b> 0 = Standard E = Piezo & IID
									<b>Option:</b> 0 = Standard
									<b>Colour:</b> A = Grey RAL 9006 B = Black RAL 9005 D = White RAL 9016
									<b>Option:</b> 0 = Standard L = Bench bracket on left narrow side R = Bench bracket on right narrow side
									<b>Plug:</b> 0 = 6-pole minifit plug
									<b>Spindle type:</b> 0 = 20 mm pitch - 800 N 1 = 12 mm pitch - 1200 N
									<b>Actuator type:</b> DL19



All cables for creating a fully connected DESKLINE system must be ordered separately. We offer a range of different versions and lengths. For more information as ordering number, colour and length of the cables - please contact your local LINAK.

#### Terms of use

The user is responsible for determining the suitability of LINAK products for specific application. LINAK takes great care in providing accurate and up-to-date information on its products.

However, due to continuous development in order to improve its products, LINAK products are subject to frequent modifications and changes without prior notice. Therefore, LINAK cannot guarantee the correct and actual status of said information on its products.

While LINAK uses its best efforts to fulfill orders, LINAK cannot, for the same reasons as mentioned above, guarantee the availability of any particular product. Therefore, LINAK reserves the right to discontinue the sale of any product displayed on its website or listed in its catalogues or other written material drawn up by LINAK.

All sales are subject to the Standard Terms of Sale and Delivery for LINAK. For a copy hereof, please contact LINAK.