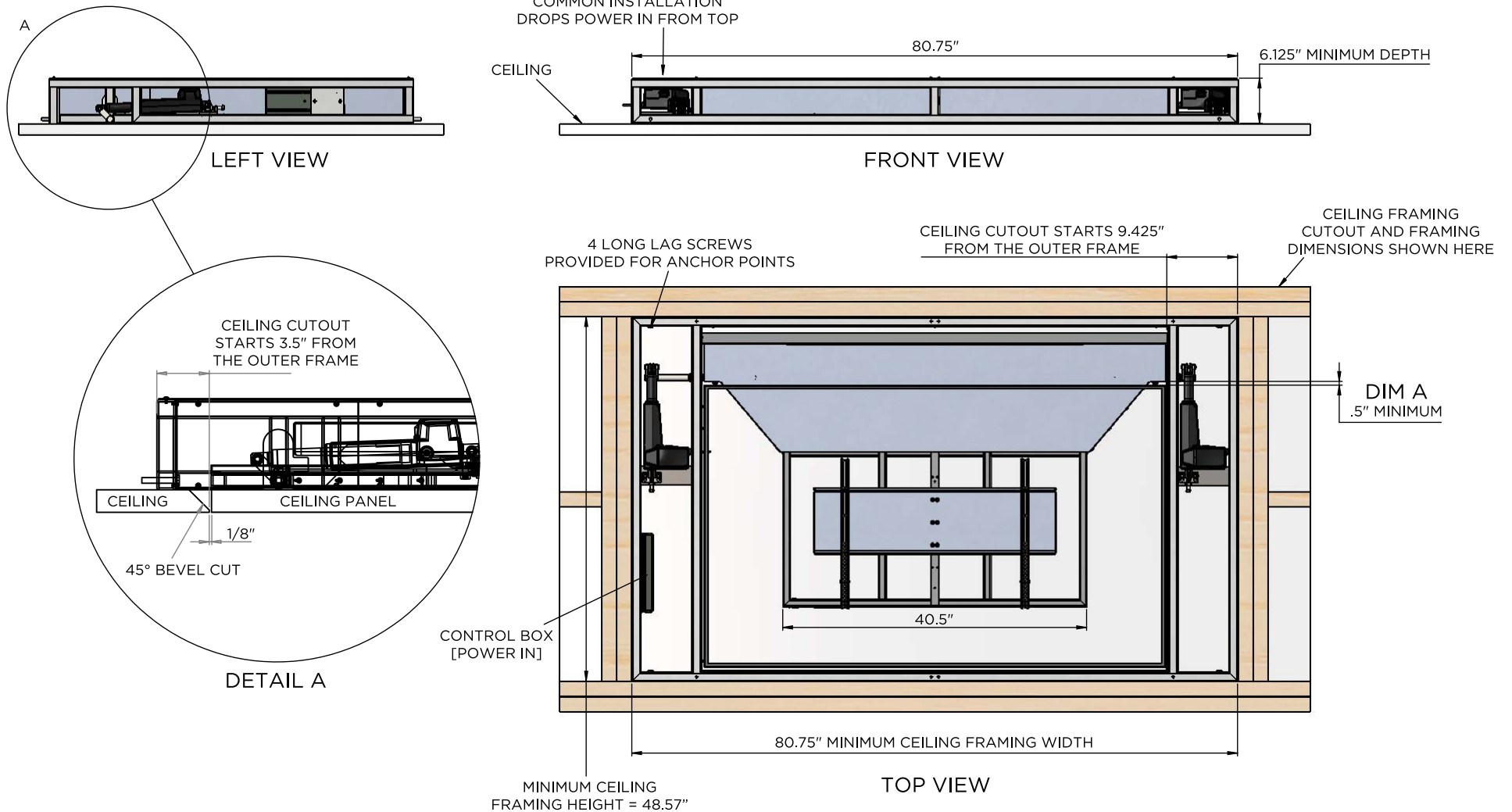


MODEL CL-65 DIAGRAM



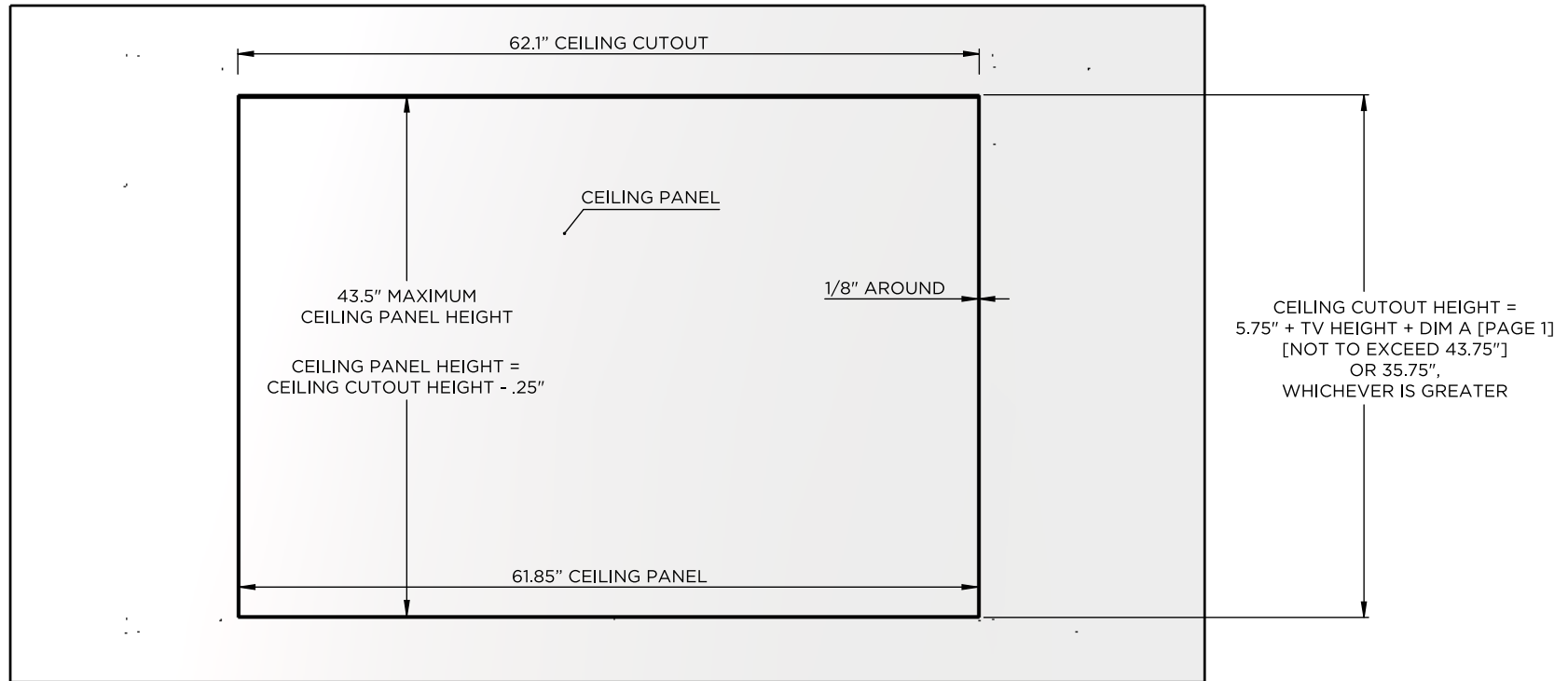
NOTES:

1. NEXUS 21 RECOMMENDS THIS INSTALLATION BE COMPLETED BY A LICENSED CONTRACTOR
2. MAX TV WIDTH = 61.5"
3. MAX TV HEIGHT = 37.5"
4. MAX TV DEPTH = 3.5"
5. FOR THIS LIFT MODEL, THE TOTAL WEIGHT CAPACITY [INCLUDING TV AND CEILING PANEL] IS 100 LBS
6. SUPPLIED SYSTEM WEIGHT = 120 LBS
7. USE SUPPLIED 32x SELF TAPPING SCREWS TO MOUNT CEILING PANEL DIRECTLY TO SUBFRAMING
8. WHEN DETERMINING TV HEIGHT, ALWAYS USE MANUFACTURER SUPPLIED "TV WITHOUT STAND" HEIGHT
9. LIFT MECHANISM IS WHITE POWDERCOATED ALUMINUM. COLORS IN DIAGRAM ARE FOR CLARITY ONLY.

nexus²¹
CONCEALMENT SYSTEMS

COPYRIGHT 2016 - ALL RIGHTS RESERVED
 UPDATED 02/17/16

MODEL CL-65 DIAGRAM



BOTTOM VIEW